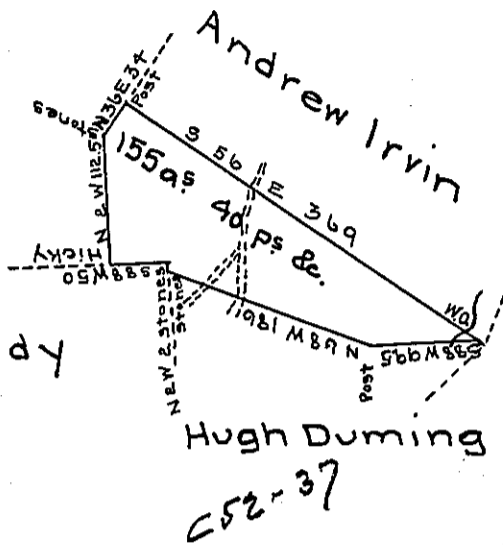


Settled by
Eleanor Gibson }

Robt Dewoody



Draft of a tract of land situate in Sandy Creek township, Venango county, West of the Allegheny river on the waters of Sandy creek (including parts of two surveys heretofore made in the names of Henry Stricklin and Eleanor Gibson, respectively) Surveyed 10th May 1838 for William McElheney on improvement & settlement.

Rich^d Irwin Surv^r

I accept and approve of the above survey given under my hand this 3^d day of November A.D. 1851.

To J. Porter Brawley Esq }
Surveyor General of Pa. }

Matthew Riddle D.S.

IN TESTIMONY that the above is a copy of the original remaining on file in the Department of Internal Affairs of Pennsylvania, made conformably to an Act of Assembly approved the 16th day of February, 1833, I have hereunto set my Hand and caused the Seal of said Department to be affixed at Harrisburg, this eighth day of February 1906

Joac N. Brown
Secretary of Internal Affairs.